



Extra robust, pressure-, saltwater- and corrosion-proof stainless steel housing that can be configured with the same sensors and electronics as the SB housing series, for use in harsh environments, in aggressive media and in seawater. It is available with a compact stainless steel cable gland as well as a Subconn® connector able to be plugged underwater for underwater usage and harsh marine environments.

Features

- extra robust, pressure-, saltwater- and corrosion-proof stainless steel housing
- twist-free 4-point fastening of rigid 3.2mm thick base PCB
- can be equipped equivalent to SB housings SB1I, SB2I, SBG3I, SB1U, SB2U, SBG3U, SB1S, SBS1U, and SB360
- all SEIKA sensors fit the housing and can be installed in different directions of operation
- sensors and sensor electronics electrically isolated from housing
- the output signals for each sensor are calibrated to customer's specifications in the required directions of operation
- for electrical characteristics, please see the datasheets of the corresponding SB sensor-boxes
- also available with ATEX certification, see [XB ATEX](#)

Description

The XB sensorbox is an extra robust, pressure-, saltwater- and corrosion-proof stainless steel housing with an integrated sensor or sensors and electronic systems as described for the SB series sensor casings.

The impermeable stainless steel cable gland and compact stainless steel housing size enable the use of this high quality measuring system in especially harsh operating conditions.

Application

The XB housing is used for precise inclination or acceleration measurements under harsh operating conditions. Possible output signals include 0.5V ... 4.5V and 4...20mA. Areas of application include construction, mining, agricultural machinery, transportation and conveyor systems, ships, in aggressive fluids and in saltwater, in high pressure environments, operation and automation technology as well as general mechanical engineering. Especially when configured with an underwater pluggable connector the housing is well suited for offshore applications.

Specifications

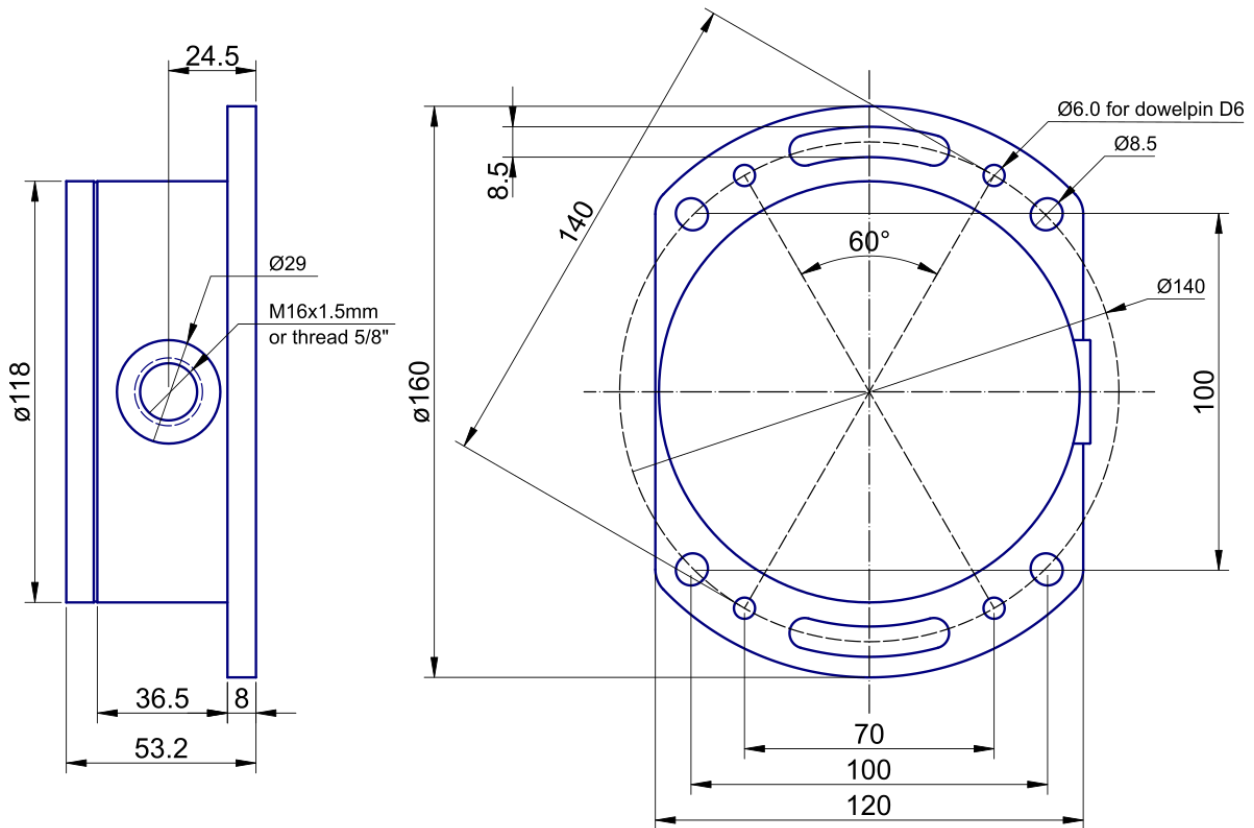
Housing material	V4A (saltwater proof)
Cable gland	M16 x 1.5 cable gland, clamping range 6mm...10.5mm (V4A stainless steel with integrated strain relief) optional: • Subconn® connector (can be plugged underwater)
Pressure resistance	10 bar (1MPa) optional: 100 bar (10MPa), 1000m water depth with Subconn® connector
Terminals	depending on the built-in board
Measuring range, resolution, etc.	depending on the integrated sensor(s)
Mounting position	any (standard: wall mounting, cable on the right)
Degree of protection	IP68/69
Measuring planes (N.. sensor)	3 main housing planes
Measuring plane (NG.. sensor)	parallel to housing bottom
Measuring directions (B.., BD.. sensor)	in X,Y,Z coordinates of housing
Torque housing lid	30Nm ... 50Nm
Electrical values	please see datasheets of identically equipped SB sensorboxes
Operating temperature	-40°C ... +85°C
Weight	2.7kg ... 3.1kg depending on the configuration

• The box is delivered with an individual calibration record that includes the precise offset and sensitivity values, the static characteristic curves and the linearity deviation curves.

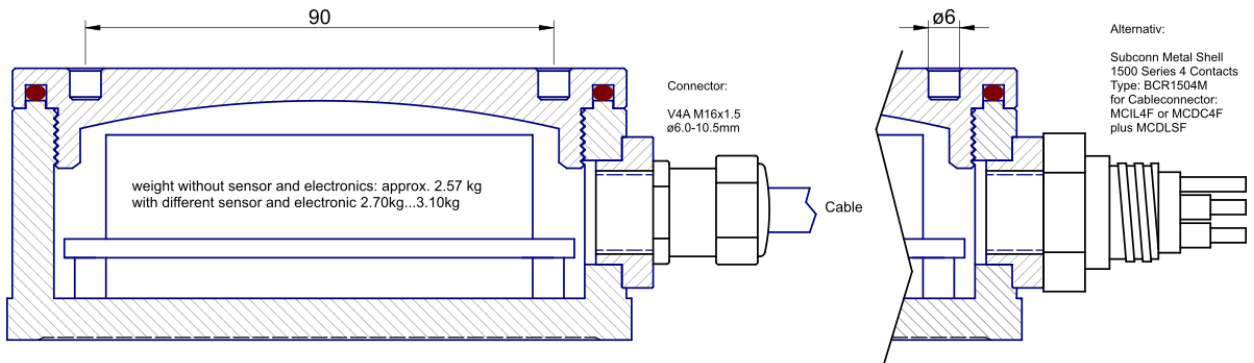
Options:

- Subconn® connector and cable for underwater usage and harsh marine environments
- extended temperature range
- special measuring ranges • silicon encapsulation • custom wiring
- individual temperature drift compensation of the offset and the sensitivity

Dimensions (in mm)



Dimensions (in mm) with cable gland or underwater connector



Nomenclature

- XB1i = XB Housing including electronic and sensor like in the Sensorbox SB1I
- XB2i = XB Housing including electronic and sensors like in the Sensorbox SB2I
- XB3i = XB Housing including electronic and sensors like in the Sensorbox SBG3I
- XB1U = XB Housing including electronic and sensor like in the Sensorbox SB1U
- XB2U = XB Housing including electronic and sensor like in the Sensorbox SB2U
- XB3U = XB Housing including electronic and sensor like in the Sensorbox SBG3U

XB1S = XB Housing including electronic and sensor like in the Sensorbox SB1S

XBS1U = XB Housing including electronic and sensor like in the Sensorbox SBS1U

XB360 = XB Housing including electronic and sensor like in the Sensorbox SB360

Accessory XBZ1 — special screw-top opener



typical use

